

<b>Rigid Body Driver</b>	<b>Location: Darwin</b>	<b>PUMA/Direct Haul</b>
--------------------------	-------------------------	-------------------------

Description: Driver performs a pre start vehicle check daily. Driver loads truck with fuel at an off site location taking approx 20 min to fill each barrel. Drivers average 3-4 loads/day and remainder of day is competing yard work on site.

PPE: Cotton high visibility shirt, cotton long pants, steel capped boots, hard hat and safety goggles for loading fuel, steel capped boots, gloves.

Roster: 6 days on/1 day off. Roster varies depending on work load.

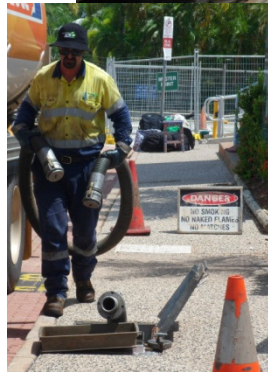
Environment / Health: Exposure to weather (heat/storms/wind/rain), chemical exposure, proximity to moving vehicles on some locations when dipping fuel tanks.

Task:	Photo:
<p><b>Pre Start Vehicle Inspection:</b> Driver checks daily truck fluid levels (forward reaching) and performs walk around visual vehicle inspection. Essential task.</p> <p><b>Freightliner:</b> To access under the bonnet, the driver uses a pinch bar to lever bolts securing bull bar (22 kg) and removes a central pin, manually supporting and lowering a pivoting bull bar from vertical to horizontal position. Straps are pulled on the side of the cab to release bonnet and bonnet (16 kg) is pushed from chest height to overhead (awkward load). To lower the bonnet, the weight is supported to lower back into position. The bull bar is manually lifted and held in position while reaching to pick up and replace bolts. Driver must also visually inspect the barrel from the top accessed by a ladder.</p> <p><b>DV633</b> Vehicle does not have bull bar or manual bonnet lift (see picture) reducing the manual handling requirements of this task.</p>	
<p><b>Loading Fuel:</b> Driver drives truck from site to loading area (~ 20 min drive). Driver may have to queue for fuel bay. Driver removes API caps knee to thigh height and secures overhead pivoting hose. Driver empties residual fuel into bucket (max 11 kg) and carries/pours at waist height. Driver steps up one step to computer entry station and must visually monitor fuel transfer. Essential task.</p>	<p>Unable to take pictures at this site.</p>
<p><b>Driving:</b> Freightliner cab access is via 3 vertical steps 43 cm/50 cm/47 cm with rail while maintaining 3 points of contact. Freightliner is manual operation. Cab access to DV633 is awkward as steps aligned to front of cab and require rotation to enter cab/seat. DV633 is automatic drive. Driver operates from fully adjustable suspension seat from air-conditioned</p>	

Task:	Photo:
-------	--------

cab. Frequent driving on unpaved site roads with most runs 10-20 min an occasional max of 45 min. Essential task.

**Unloading Fuel:** Driver sets up perimeter cones (2kg) and sign (<5 kg) stored from waist to chest height depending on vehicle. Driver checks fluid levels by dipping tanks manually removing cover (up to 8 kg on ground) and key lock or by electronic sensor. Stand pipe (6 kg) attached for gravity feeds below ground with hoses connected waist to ground height by latches. Hose up to 16 kg carried around body from chest height tray. Hoses may have residual fuel post pump up to ~11 L (total 30 kg). Driver may remove multiple hoses to attach. Driver may have to climb stairs to access hose connection point. Driver may walk up to 200m to complete paperwork in admin site areas. Hose reel may be used on site to fuel equipment. Driver pulls hose from reel with automatic button push to re feed hose onto reel. Driver will often stand and push buttons to start fuel while the site operator will pull the hose from the reel to the fuel entry. Essential task.



**Washing Trucks:** Drivers must clean trucks in the wash bay. Driver uses soap and water pressure trigger gun to spray truck. Driver scrubs sides with broom with overhead barrel access via ladder maintaining 3 points of contact. Usually, a second yard hand assists with washing the truck (20 min/2 person job) Up to 1 hour as one person job. Task performed weekly. Essential task.



## Physical Demands

**Job: Rigid Body Truck Driver**

Item	Other	Occasional	Frequent	Constant
Floor-Bench	Awkward load	22 kg		
Bench - Bench	Awkward load	22 kg		
Bench -Shoulder	Awkward load, forceful push/pull	16 kg		
Bench - Above Shoulder	Awkward load, forceful push/pull	16 kg		
Bilateral Carry	Awkward load	30 kg		
Single Arm Carry	Awkward load	15 kg		
Sitting				x
Walking Even/Uneven ground			x	
Ladder		x		
Balancing			x	
Kneeling			x	
Squatting			x	
Stairs		x		
<b>Neck:</b>				
Rotation			x	
Forward Bend			x	
Bend Backward			x	
<b>Back:</b>				
Forward Bend			x	
Side Bend			x	
Rotation			x	
Bend Backward		x		
<b>Arms:</b>				
Forward Reach				x
Side Reach		x		
Overhead Reach		x		
Reach Behind		x		
Hand Manipulation				x
<b>Wrist/Hands:</b>				
Bend Down			x	
Bend Up			x	
Bend toward thumb/little finger			x	
Forearm Rotation			x	
Grip				x
<b>Frequency Classifications</b>				
	<b>% Task Time</b>	<b>Reps Per Day</b>	<b>Reps Per Hour</b>	<b>Reps Per Minute</b>
N - Never	-	-	-	-
O - Occasionally	1-33	1-100	1-12	1 every 5-15
F - Frequently	34-66	101-500	12-63	1 every 1-5
C - Continuous	67-100	500+	>63	1 or more

